

## The Hong Kong Academy for Performing Arts Libraries User Guides on Wireless Display Adaptor (Seminar Room B)

The wireless display adaptor allows you to share the screen of your laptop, tablet or smartphone to HDTV. The adaptor works with Miracast certified Operating System.

✓ Compatible    ✗ Not Compatible    — Limited Functionality

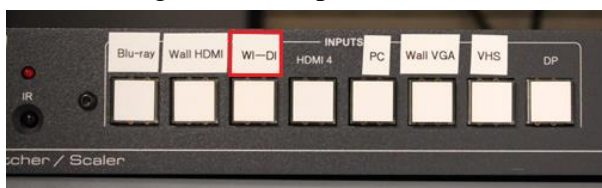
Windows	Mac OS X	Android	iOS
Win 10 64 bit ✓	Mac OS 10.10 ✗	Android 5.0, Nexus 9 —	iOS 8 ✗
Win 10 32 bit ✓	Mac OS 10.9 ✗	Android 4.4.4, Nexus 5 ✗	iOS 7 ✗
Win 8.1 32 bit ✓	Mac OS 10.8 ✗	Android 4.2 —	iOS 6 ✗
Win 8.1 64 bit ✓	Mac OS 10.7 ✗	Android 3.2 ✗	

Refer to below steps for connection:

1. Switch **on** the TV by using remote control
2. Switch **on** the power of Wireless Display Adaptor




3. On video signal switch, press “**WI-DI**” button



4. On your device:  
[Windows 10]

- i. Activate **Windows Action Center**:

Laptop: Click the icon  at system tray or use shortcut key “Winkey + A”

Tablet: Swipe from the right edge of the screen

- ii. Click the Connect button  and tap “Library\_Seminar\_Room\_B”

[Windows 8.1]

- i. Activate **Devices** tab:

Laptop: Use shortcut key “Winkey + K”

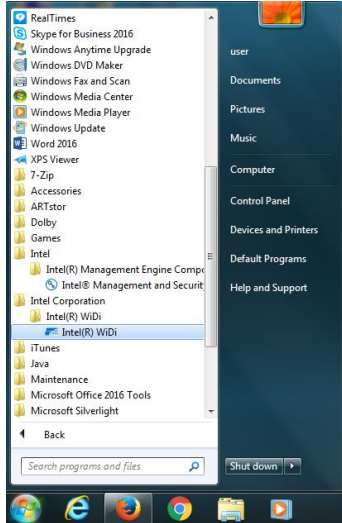
Tablet: Swipe from the right edge of the screen, and then tap **Devices**.

- ii. Click **Project** 
- iii. Choose “Library\_Seminar\_Room\_B”

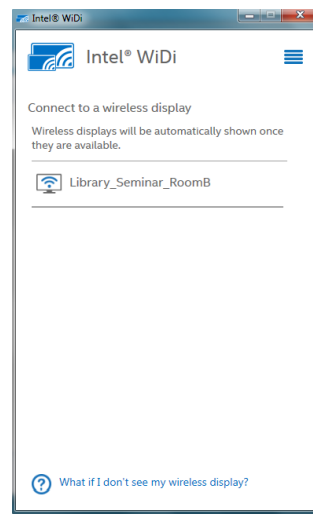
## [Windows 7]

Remarks: Windows 7 will require Intel® WiDi application which had already discontinued. However, you can borrow Windows 7 laptops from Library and follow below steps for screen projection.

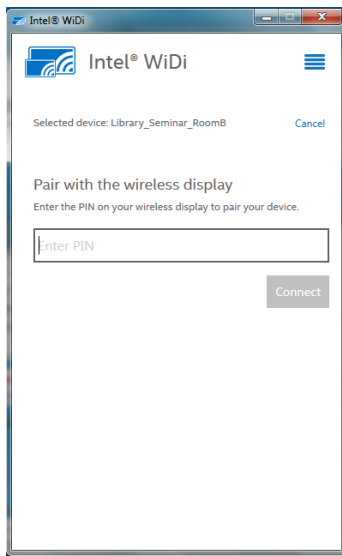
1. Open Task bar select Intel® WiDi



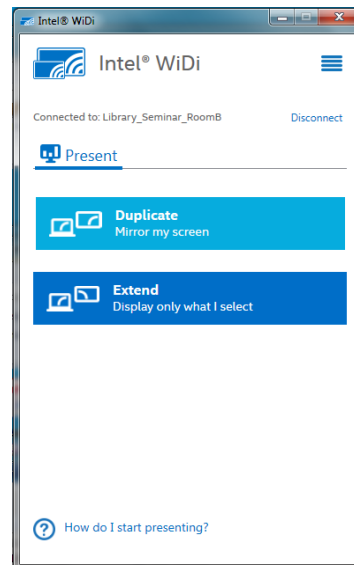
2. Select “Library\_Seminar\_Room\_B”




3. Enter the PIN displayed on TV screen



4. Choose the presentation form



## [Android with Miracast]

1. Open your device's Settings app 
2. Tap **Display** > **Cast**
3. On the list of casting devices, tap “Library\_Seminar\_Room\_B”

5. Switch **off** the power of Wireless Display Adaptor after use.